

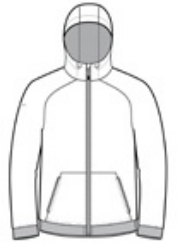


This wind-resistant, water-repellent jacket delivers powerful performance and features an embossed geometric pattern and reflective details for an unrivaled look.

- 100% polyester embossed woven body
- 100% polyester mesh body and hood lining
- 100% polyester woven sleeve lining
- Three-panel hood with drawcord and toggles
- Tag-free label
- Raglan sleeves
- Reverse coil zipper
- Reflective details on right sleeve and lower back
- Port Pocket™ for easy embroidery access
- Elastic trim at cuffs and hem
- Front zippered pockets

CARE INSTRUCTIONS

Machine wash cold gentle cycle with like colors. Use mild detergent. Remove immediately. Do not allow to lay on itself when wet. Do not bleach. Tumble dry low. Cool iron if needed. Do not dry clean

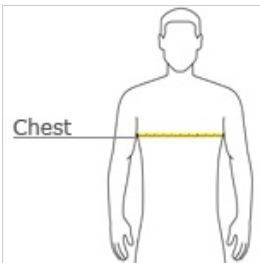


front



back

HOW TO MEASURE









CHEST
With arms down at sides, measure around the upper body, under arms and over the fullest part of the chest.

SIZE CHART

	XS	S	M	L	XL	2XL	3XL	4XL
Chest	32-34	35-37	38-40	41-43	44-46	47-49	50-53	54-57

COLOR INFORMATION

					
Black/ Black PMS NTR BLACK C	Black/ True Red PMS NTR BLACK C	Graphite/ Black PMS 7540 C	Lime Shock/ Black PMS 375 C	True Navy/ True Navy PMS 533 C	True Royal/ Black PMS 7687 C